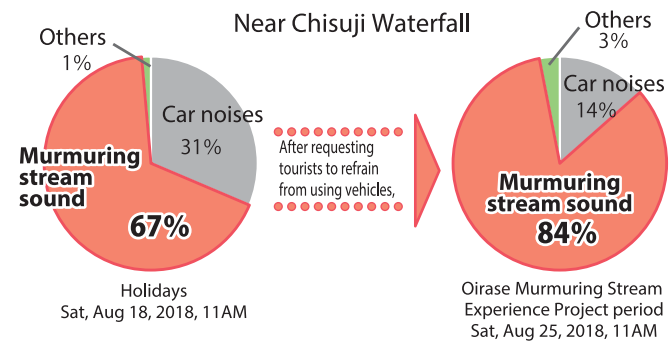




Survey results of last year

Murmuring stream sound increased by 17 points to 84%

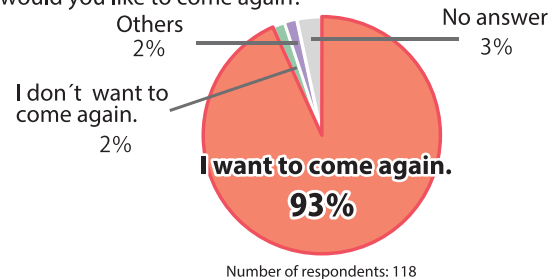


From the participants joining last year

From the survey results of "Oirase Murmuring Stream Experience Project 2018"

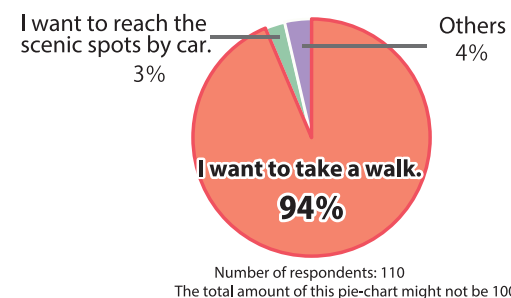
93% of participants answered "I want to come again!"

If we make another request for using no car around Oirase Gorge, would you like to come again?



94% of participants answered "I want to walk again next time!"

How would you like to move around Oirase Gorge next time?



"I found fantastic features of the gorge better in the environment of fewer cars." "I think this project is effective to protect and enjoy nature." These comments made us confirm that many tourists would like to enjoy hiking with fewer cars around. More of your cooperations will improve the environment of the gorge.

Contact

Towada City Aomori Prefecture
Ministry of Land, Infrastructure and Transport
 Department in charge: Aomori River National Highway Office
 Research Section 2
 TEL: 017-734-4570 (Weekdays 9:00 - 17:00)

<http://oirase-seseragi.com/>



enjoy
the peaceful
gorge stream.



Oirase Murmuring Stream Experience Project

Sat - Sun, Aug 24-25, 2019
10AM-2PM

During the period, please refrain from using a car to enter the Oirase Gorge area.

This is not traffic regulation. Your participation makes the neighborhood safer and restores the "sound environment" of the gorge.

Towada City Aomori Prefecture
Ministry of Land, Infrastructure and Transport
 Department in charge: Aomori River National Highway Office Research Section 2
 TEL:017-734-4570 (Weekdays 9:00 - 17:00)

There is heavy traffic along the walkways.

The increasing number of tourists' cars damage its peaceful and photogenic environment.

Oirase Gorge is one of "the 100 Soundscapes to be Preserved in Japan." Roadways here run along the streams and walkways. Its easy access by car, however, causes environmental problems such as traffic congestion and noises. "Oirase Murmuring Stream Experience Project" aims to restore its original state of the environment with your cooperation. Leave your car at the entrance to the gorge, take another public transportation if necessary, and expose yourself to the message from the stream.

August
Intensive Awareness Month

In August, Intensive Awareness Month, tourists are requested to refrain from driving in the gorge area. Temporary restrooms are also installed.

Feel the air of great nature on the walkways along the gorge.

This scenic site features the walkways along the gorge stream, which is extraordinary even in Japan.

Oirase Gorge has been formed at a heat by Nature carving its ground with volcanic ash and pumice. The stream has been slowly covered with deep forests which develop the rich ecosystem. Its uniquely formed U-shaped cross section of the gorge makes it possible to hike on the walkways just besides the gorge, rather than viewing from far away. The clear water flows down 14 km long madly or gently, sometimes as waterfalls. It is definitely an unforgettable nature experience appealing to all five senses.

Park your car in the parking lot. Take a shuttle bus, etc., to go farther. Stress-free access to the gorge is there.

It is easy to join "Oirase Murmuring Stream Experience Project." Just park your or rental car at the parking area and get a wristband at the reception. After that, enjoy the gorge by bus, rental bike or on foot. During the period, the number of (pay) shuttle bus service will increase which even offers you to hike around one place of interest and take a bus to another. The more participants, the more babbling sound of the gorge stream. It is your cooperation that will make this project successful. Get a lot of special offers to enjoy Oirase.

Even if not using the shuttle bus, come to the reception to tell your refraining from using your own car. In doing so, you can get a wristband and water. Showing the wristband will get you a variety of discounts. You can participate in it not only from Yakeyama but also from other Yasumiya, because we sell tickets for shuttle bus inside the vehicle as well. We appreciate your cooperation with no driving.



Introduction of participant's 3 privileges



Privilege 1 Walk around Oirase with a Guide (Free)

Stream Spots Experience Course
Towada West High School students guide you.

Easy travel by bus
Yakeyama parking lot (temp) bus stop (Parking lot and reception) -> Ishigedo (Ishigedo) bus stop (Approx. 11 mins) -> Kumoi-no-taki bus stop (2.9 km, Approx. 70 mins)

Easy return travel
Kumoi-no-taki bus stop -> Ishigedo (Ishigedo) bus stop (Approx. 19 mins) -> Yakeyama parking lot (temp) bus stop

Timetable of guided walking tours
Depart from Yakeyama parking lot (temp) bus stop
9:50
10:10
10:30

Waterfall Experience Course
Towada Oirase Kunizukuri University (NPO) member guides you.

Easy travel by bus
Yakeyama parking lot (temp) bus stop (Parking lot and reception) -> Nenokuchi bus stop (Approx. 32 mins) -> Kumoi-no-nagare bus stop (4.2 km, Approx. 100 mins)

Easy return travel
Kumoi-no-nagare bus stop -> Nenokuchi bus stop (Approx. 22 mins) -> Yakeyama parking lot (temp) bus stop

Timetable of guided walking tours
Depart from Yakeyama parking lot (temp) bus stop
9:50
10:10
10:30

Privilege 2 Get Oirase Gorge Water for free!

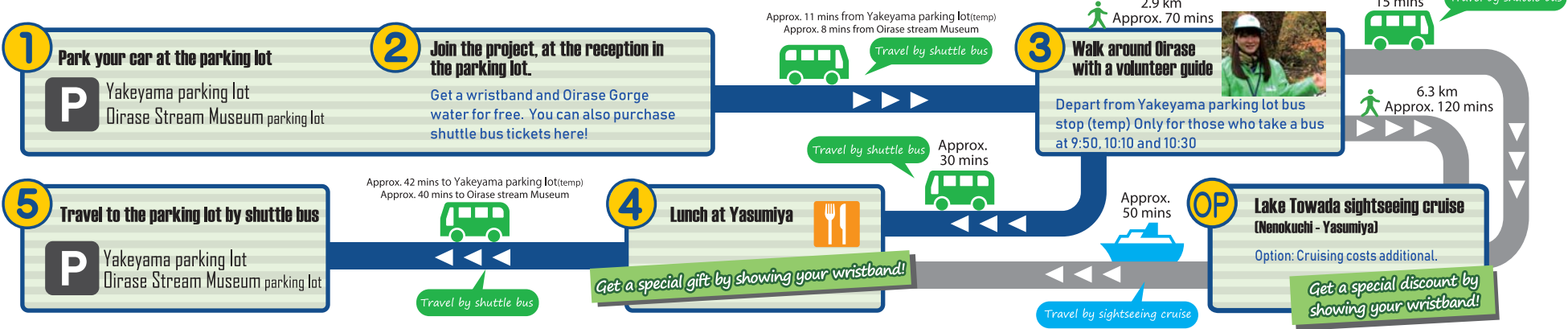
A bottle of Oirase Gorge water (500ml) is given away to each at the reception.

Privilege 3 Discounted products available in the area!

Show the wristband, and receive fantastic privileges such as discounts at stores. A list of privileges is shown at the reception.

Due to bad weather, privileges may be canceled. Thank you for your understanding.

How to enjoy during the period - guided walking tours or sightseeing cruise course



Sat-Sun, Aug 24-25, 2019 Shuttle Bus 1 Day Free Pass Adult 1,000yen

Yakeyama - Towadako (Yasumiya)		Towadako (Yasumiya) - Yakeyama	
	First Bus	Last Bus	
Yakeyama parking lot (temp)	9:50	16:30	Towadako (Yasumiya)
Yakeyama	9:52	16:32	Shimo utarube
Oirase Stream Museum	9:53	16:33	Utarube
Shimeikei	9:55	16:35	Nenokuchi
Ishigedo (Ishigedo)	10:01	16:41	Choshi-otaki
Makadoiwa	10:04	16:44	Kumoi-no-nagare
Kumoi-no-taki	10:07	16:47	Kumoi-no-taki
Kumoi-no-nagare	10:11	16:51	Makadoiwa
Choshi-otaki	10:16	16:56	Ishigedo (Ishigedo)
Nenokuchi	10:22	17:02	Nenokuchi
Utarube	10:27	17:07	Oirase Stream Museum
Shimo utarube	10:28	17:08	Yakeyama
Towadako (Yasumiya)	10:37	17:17	Yakeyama parking lot (temp)

Runs every 20-30 mins

Oirase Field Museum

Great charm of Oirase Gorge is being introduced on the website below. It definitely helps make your trip the best.

Please check it out.
<http://oirase-fm.com/>



Since it is not traffic regulation, the reduction of the number of cars is not guaranteed. Please be reminded that the number of cars might not decrease enough if there are few participants.

Please park your vehicles at Yakeyama parking lot or Oirase Stream Museum parking lot if you use shuttle bus. Also, the buses might be delayed due to the weather condition and traffic.